



SmartMeterTexas.com



SMART METER  
TEXAS

gridSMART<sup>®</sup>

From  
**AEP TEXAS**<sup>®</sup>

[AEPTexas.com/gridsmart](http://AEPTexas.com/gridsmart)

Register your  
Smart Meter  
today.

gridSMART<sup>®</sup>  
From  
**AEP TEXAS**<sup>®</sup>

## Knowledge is Power.

Thanks to your new Smart Meter, you'll have greater power over how you use electricity than ever before. Now, you can get online and discover how much electricity you use day-by-day and hour-by-hour so you can see how your energy-efficient actions can save you money and energy. It's all at your fingertips, and it's free. The more knowledge you have about your usage patterns, the more energy-efficient you can become to help lower your electricity bill.

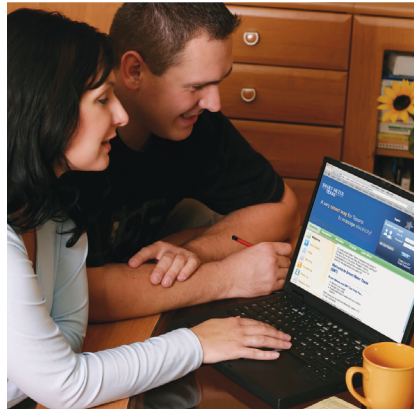
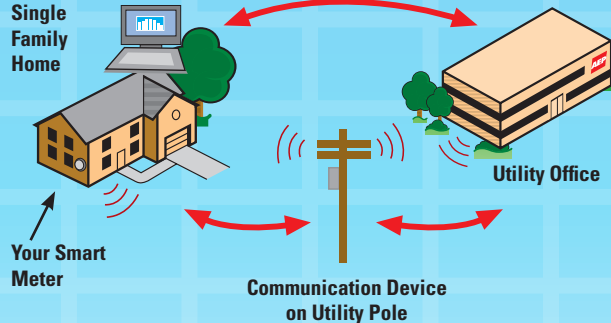
## Registering your Smart Meter is easy.

1. You'll need your meter number and ESI ID number, which can be found on your electric bill.
2. Go to **SmartMeterTexas.com**
3. Click "Register Now" and follow the steps to create your account.
4. View your daily electric usage and see how your energy-efficient actions can save you money and energy.

## Registrar su Smart Meter (Medidor Inteligente) es fácil:

1. Necesita el número de su medidor y el número de ESI-ID que puede encontrar en su cuenta de electricidad.
2. Visite el sitio de internet **SmartMeterTexas.com**.
3. Elija la opción Register Now y siga los pasos para abrir su cuenta.
4. Observe su consumo diario de energía eléctrica y note la forma en que las acciones encaminadas al consumo eficiente de energía pueden ahorrarle dinero y disminuir el consumo de electricidad.

## Advanced Metering Infrastructure System (AMI)



## What is a Smart Meter?

A Smart Meter, along with a two-way communications network, will provide near real-time collection and secure transfer of your electric usage information. This allows you to have access to more detailed information about your electricity use so you can make informed energy choices that can influence your electricity bill and your impact on the environment.

Questions? Please call AEP Texas at 1-877-373-4858  
or visit [AEPTexas.com/gridsmart](http://AEPTexas.com/gridsmart)

**gridSMART**  
From **AEP TEXAS**